

# 2100-2120 Matheson Boulevard E

Joni Blanshard\*, Vice President  
905.247.9231  
jblanshard@lennard.com

Brian Lynett\*, Partner  
905.247.9222  
blynett@lennard.com



Over 60 Years of Excellence

For Lease: Office



Adding value  
in a changing  
world.

**Lennard:**

602-350 Burnhamthorpe Road W, Mississauga  
905.625.5020 • [lennard.com](http://lennard.com)

\*Sales Representative

# 2100-2120 Matheson Boulevard E

Office available for lease in the heart of Airport Corporate Centre. Located on the NE corner of Explorer Drive and Matheson Boulevard E, across the street from FedEx.



Available Space

2100-202: 1,438 SF

2120-200: 1,592 SF



Net Rent

**\$11.95 PSF**

(\$0.75 PSF annual increases)

TMI

**\$6.49 PSF (2019 Estimate)**

(Utilities and janitorial not included)



Leasing Agent

**Joni Blanshard\***

Vice President

905.247.9231

jblanshard@lennard.com

**Brian Lynett\***

Partner

905.247.9222

blynett@lennard.com

\*Sales Representative

## Property Highlights

- Access to major highways, roadways, and serviced by Mississauga public transit
- Building signage available
- Ample surface parking
- The new Bus Rapid Transit (BRT) located within a 5 minute walk
- Parking: 4 per 1,000 SF

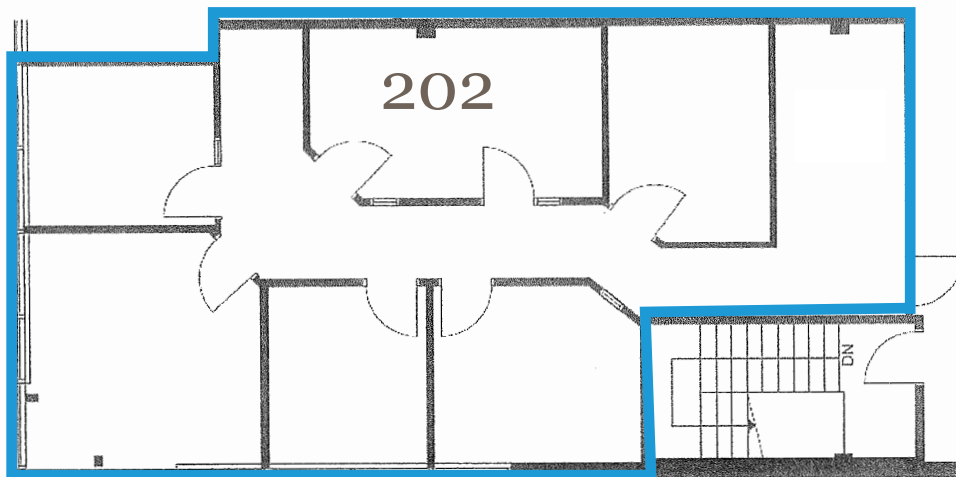
# 2100 - 2120 Matheson Boulevard East

Floor Plan

2100-202: 1,438 SF

## Suite Notes

- Finished office space
- Available 30 - 60 days



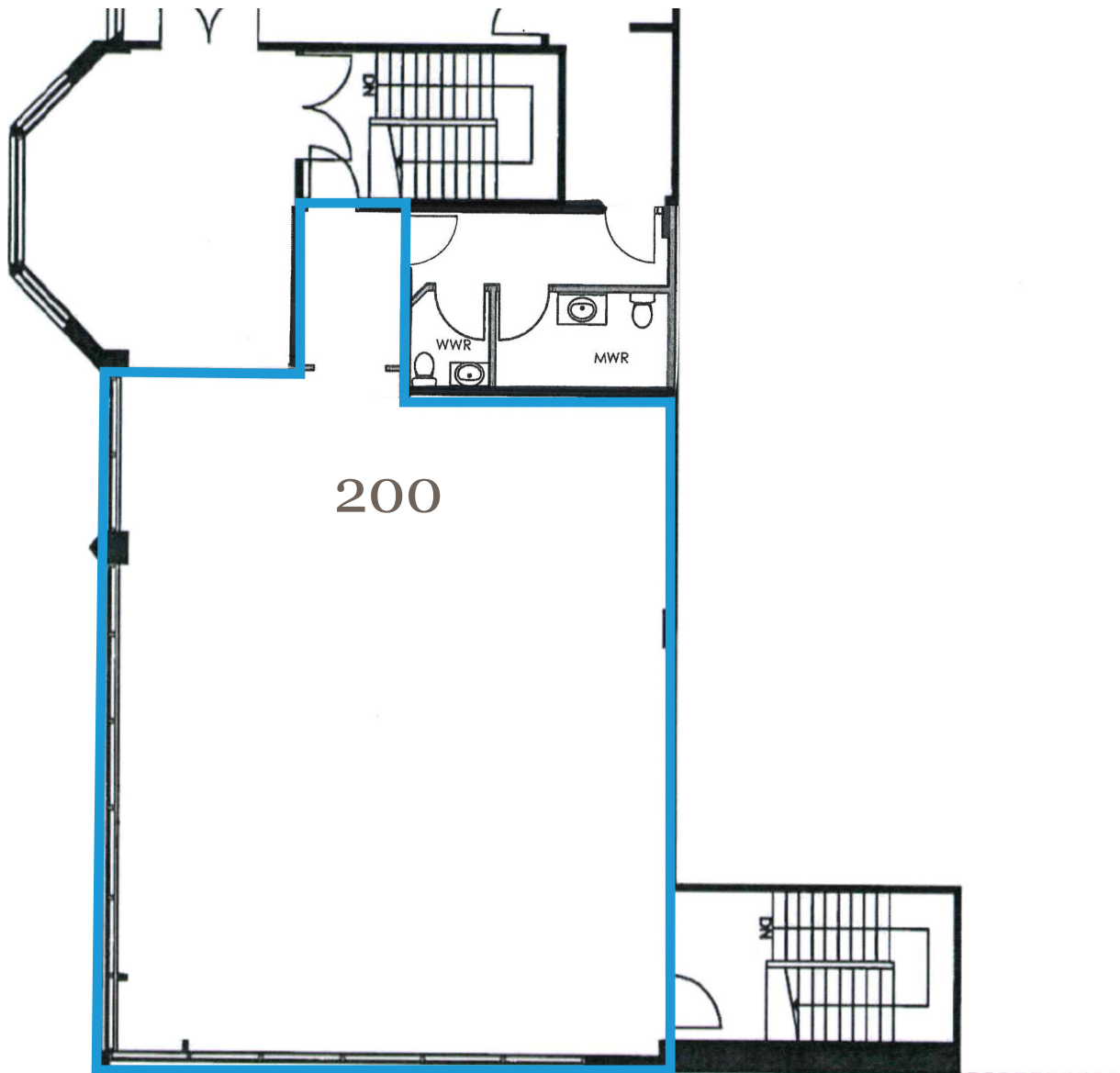
# 2100 - 2120 Matheson Boulevard East

Floor Plan

2120-200: 1,592 SF

## Suite Notes

- Open concept office space, lots of natural light



# 2100-2120 Matheson Boulevard E

